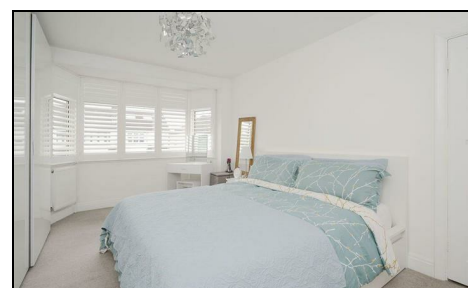


## Greenway Raynes Park, SW20 9BQ

£875,000 Freehold



**This superb THREE DOUBLE BEDROOM rear extended 1930's Blay house has a fantastic open plan kitchen/dining/family room with bifold doors onto generous rear garden. Located on a popular residential road only 0.7 miles to Raynes Park Station and High Street and within easy access to a host of well-regarded schools. There is also off street parking to the front for two cars, a spacious separate front reception room, downstairs W.C, family bathroom and NO ONWARD CHAIN.**

